

Transportation Terminal

FREMONT STREET, LAS VEGAS, NEVADA

Concept:
Expression

Techniques:
Vertical Separation
Program

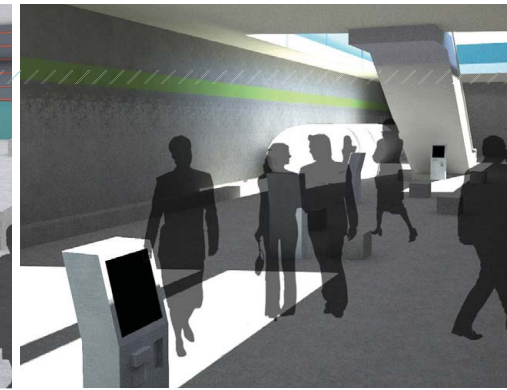
This project was part of a studio wide redevelopment of Fremont Street. The focus of this facility created a single node for site transportation options. My strategy separated these options vertically. The vehicular traffic, parking, and train system (DART) is pushed below grade while the bus transportation is raised above grade. The separation allows for a pedestrian and bike friendly ground where patrons can negotiate transportation options. Other buildings in and around the transportation hub were designed by other students as part of the redevelopment vision.



Bus



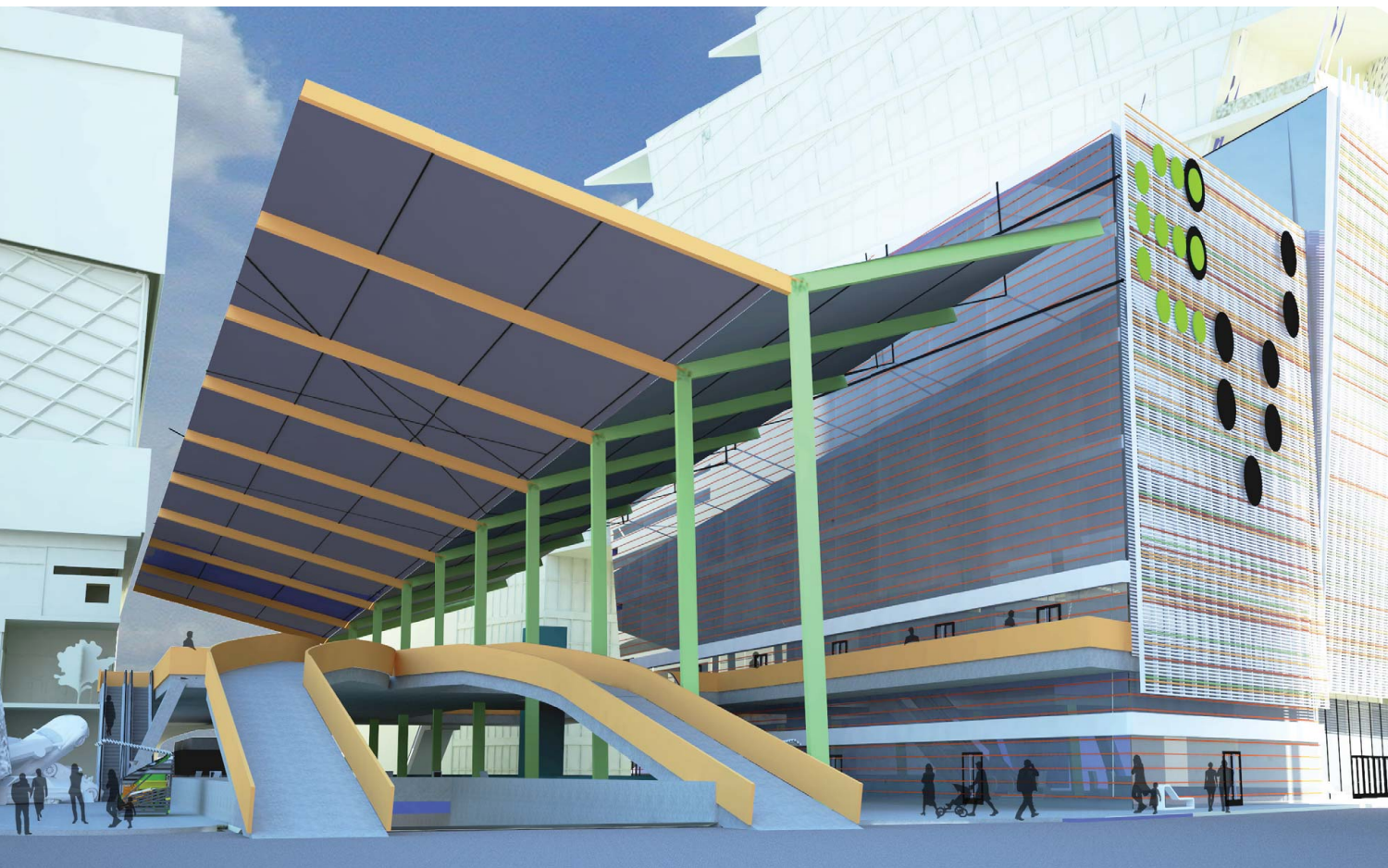
Pedestrian



DART (Rail)



Bicycle



Hotel

Bus

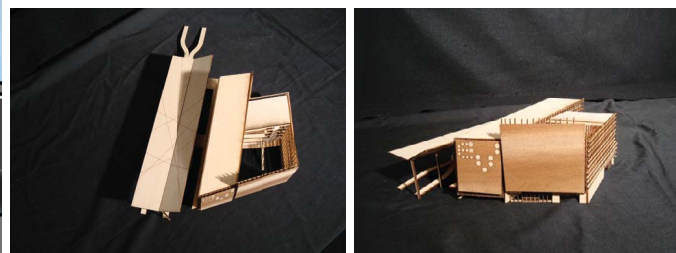
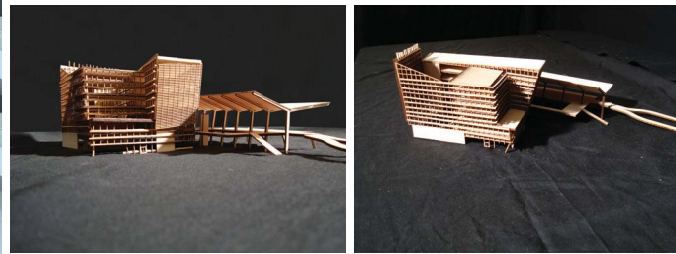
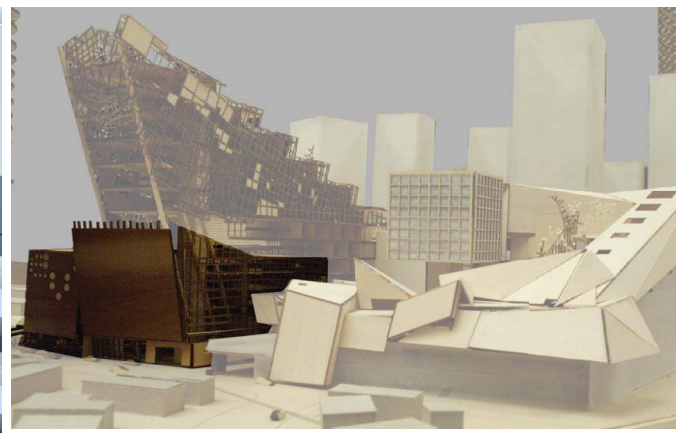
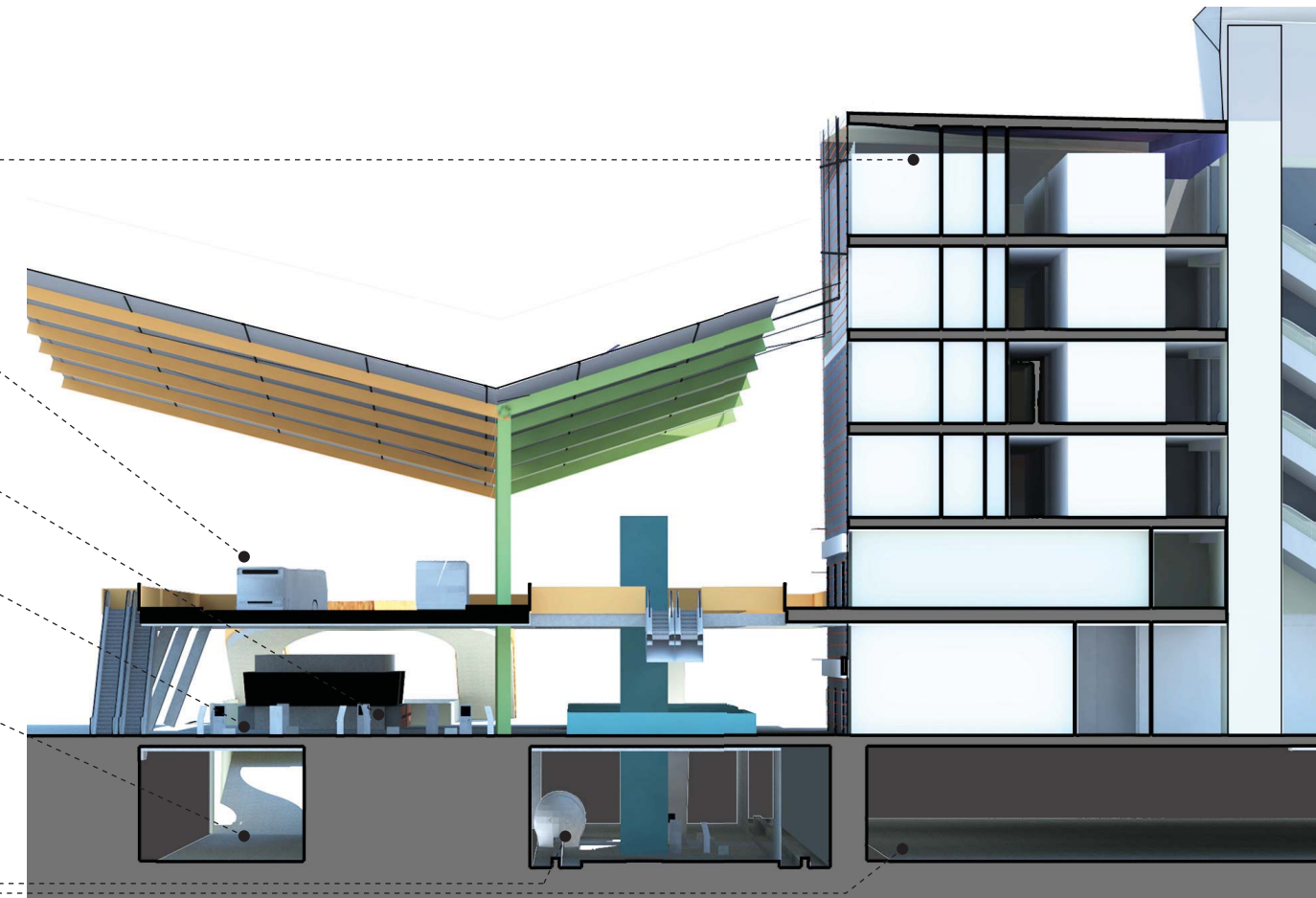
Bicycle

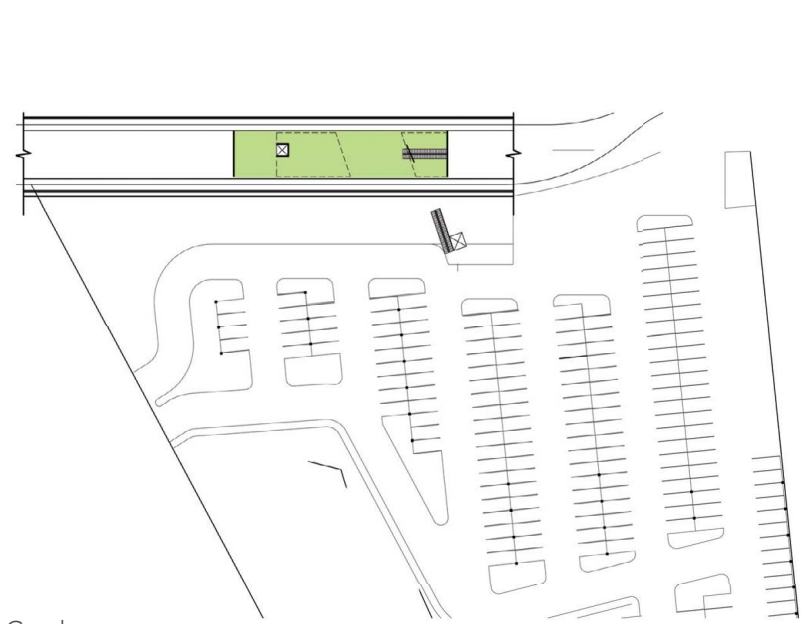
Pedestrian Street

Auto Street

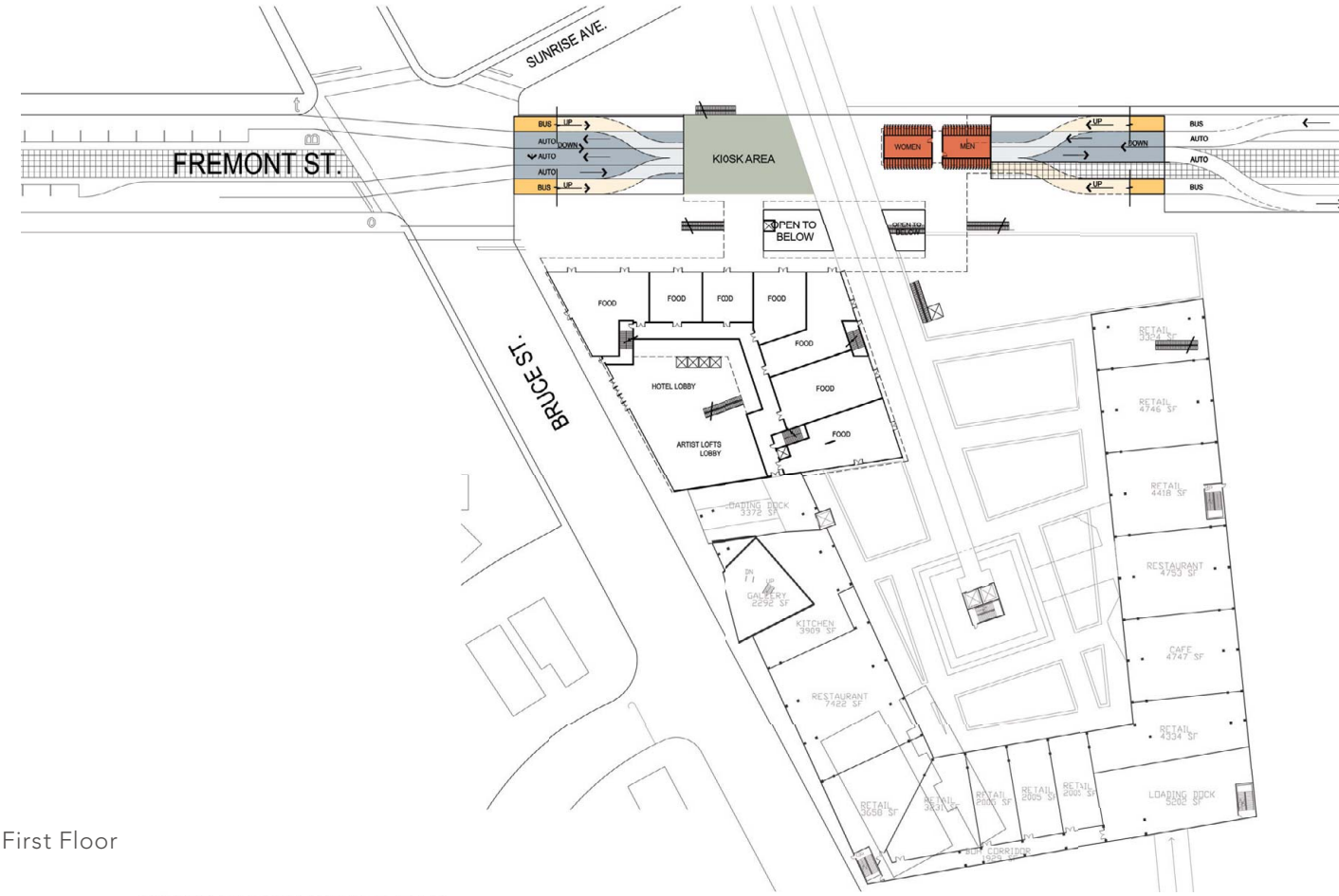
DART (Rail)

Parking

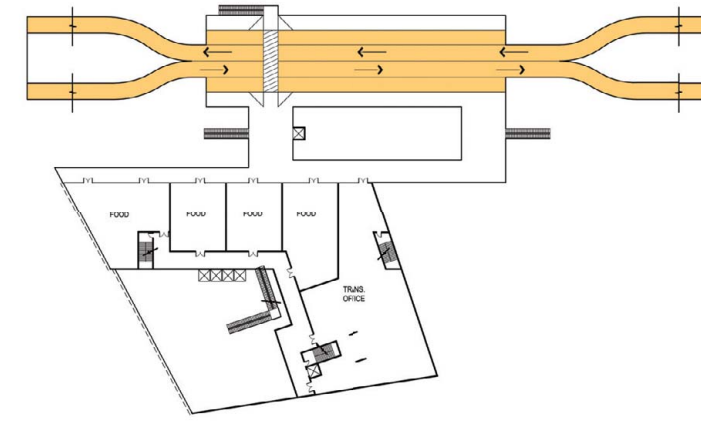




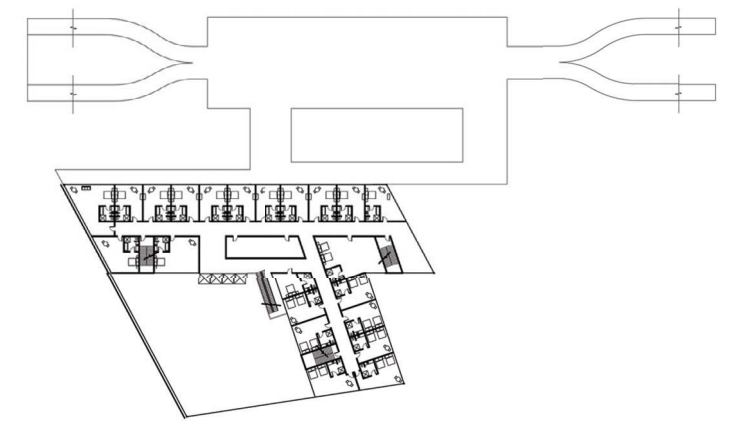
Below Grade



First Floor

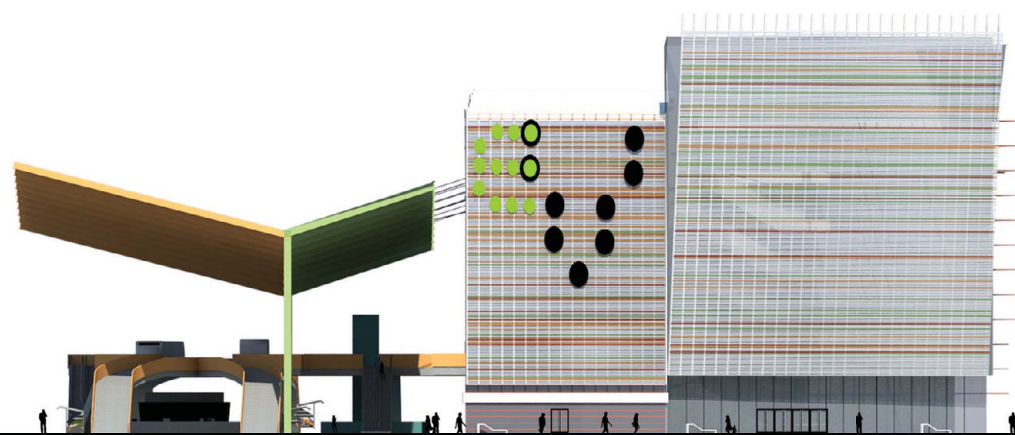


Second Floor



Floors Above

East Elevation



North Elevation

